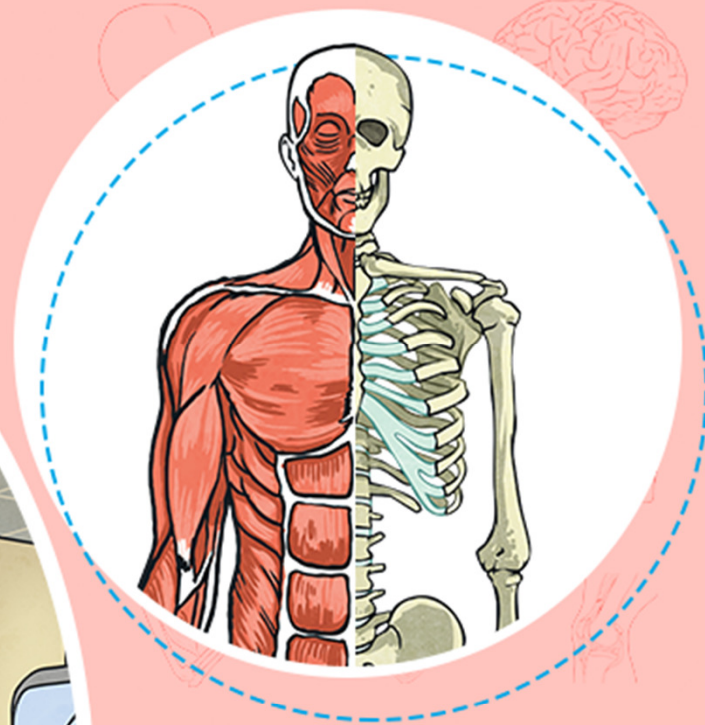
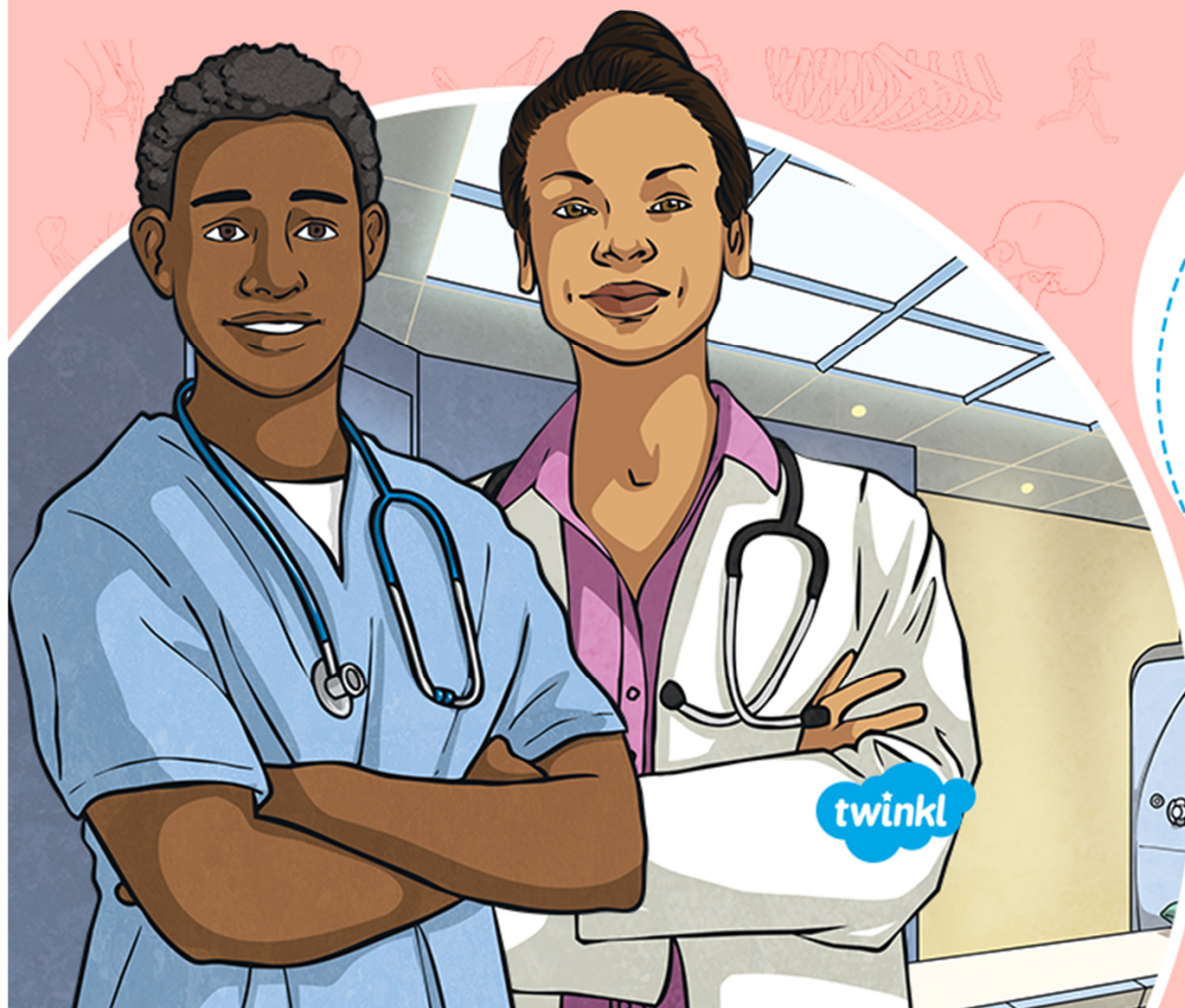


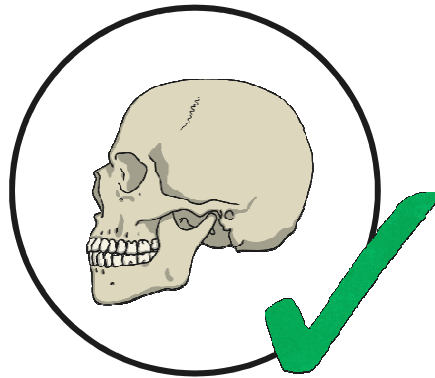
# Skeletons and Muscles Quiz



## Question 1

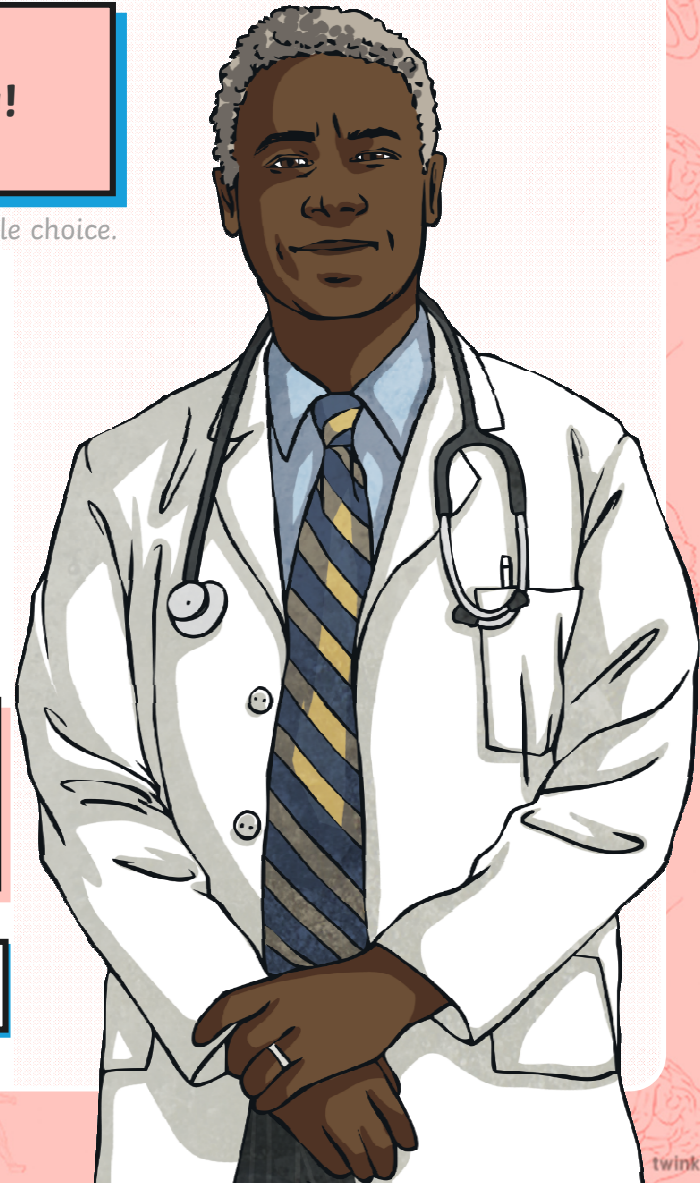
**That's not right. Never mind. Keep trying!**

Click to see multiple choice.



**That's correct, well done!  
The skull protects the brain.**

**Next**

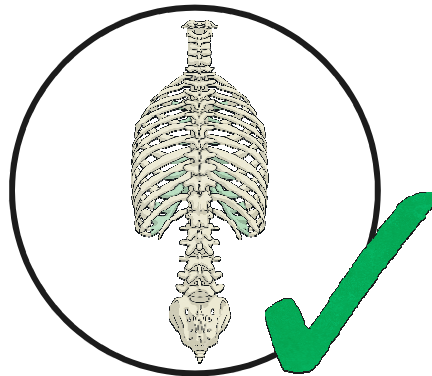




## Question 2

**That's not right. Never mind. Keep trying!**

Click to see multiple choice.



**Great job, well done!**  
**The ribs protect the heart and lungs.**

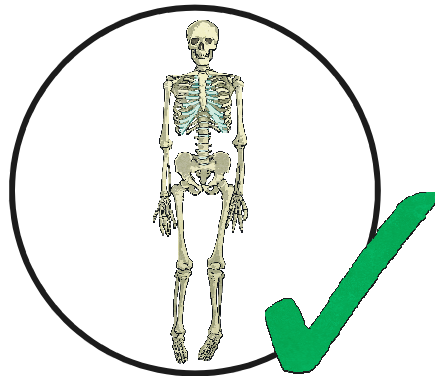
**Next**



### Question 3

**That's not right. Never mind. Keep trying!**

Click to see multiple choice.



**Fantastic, well done!**  
**Your skeleton grows with you.**

**Next**

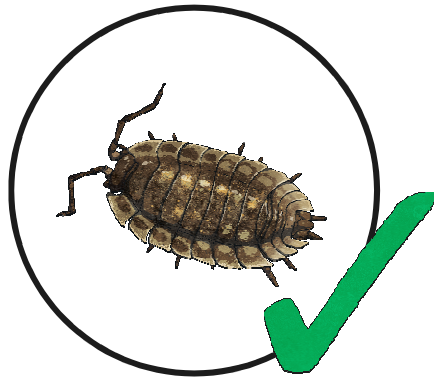




## Question 4

**That's not right. Never mind. Keep trying!**

Click to see multiple choice.



**That's right, well done!**  
**A woodlouse has its skeleton on the  
outside of its body.**

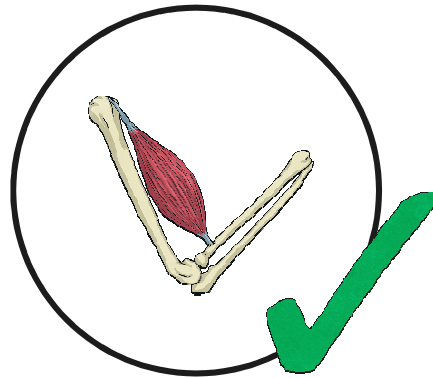
**Next**



## Question 5

**That's not right. Never mind. Keep trying!**

Click to see multiple choice.



**Great answer, well done!**  
**One muscle pulls your arm up, but you use  
a different muscle to pull it down.**

**Next**

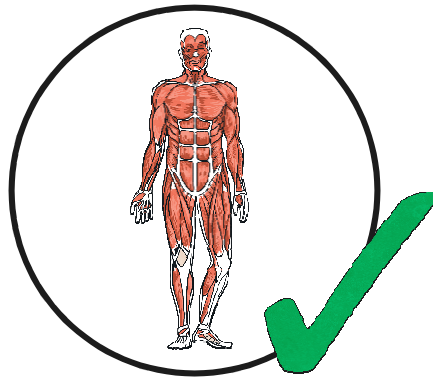




## Question 6

**That's not right. Never mind. Keep trying!**

Click to see multiple choice.



**That's the right answer, well done!**  
As one muscle **contracts** the other muscle in the pair **relaxes**.

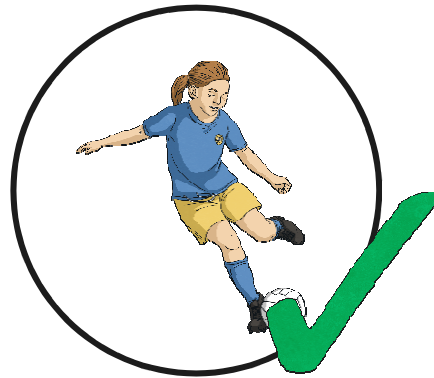
**Next**



## Question 7

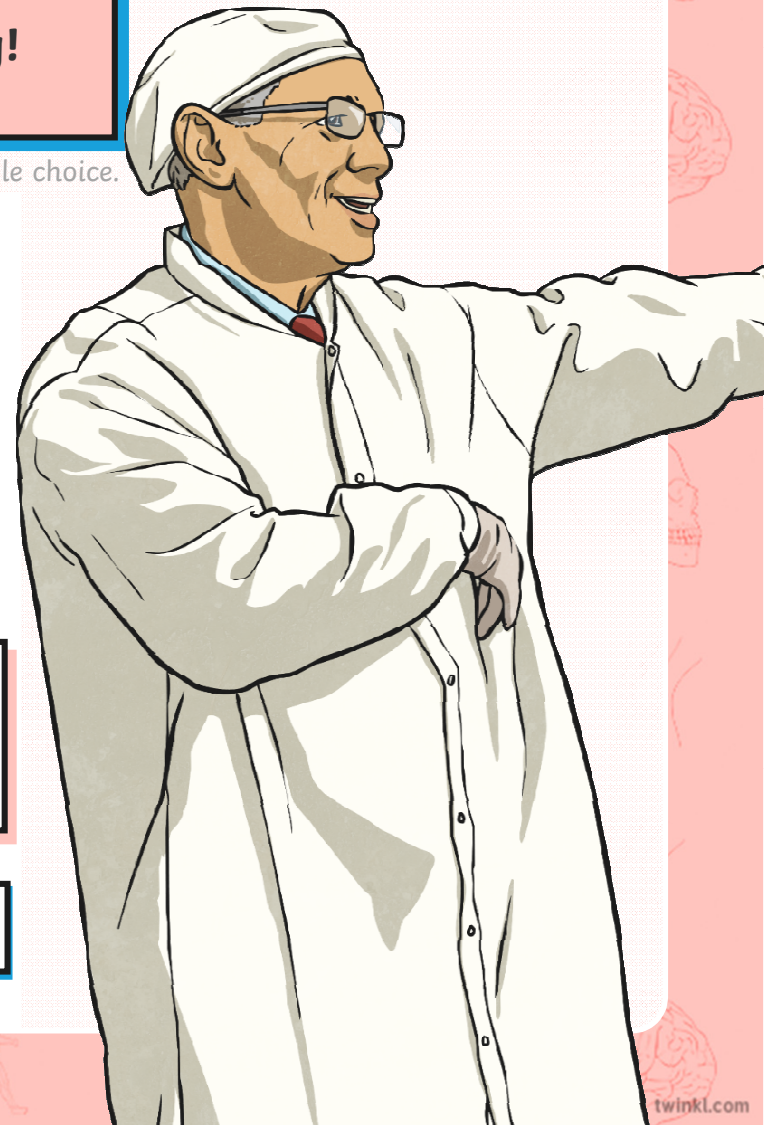
**That's not right. Never mind. Keep trying!**

Click to see multiple choice.



**Marvellous, well done!**  
**Your skeleton grows at the same rate as the rest of your body.**

**Next**

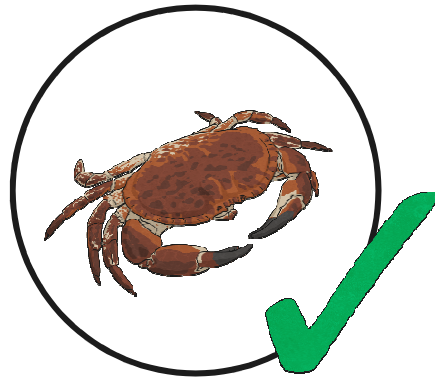




## Question 8

**That's not right. Never mind. Keep trying!**

Click to see multiple choice.



**That's the correct answer, well done!**  
**Exoskeletons (a skeleton outside of the body)**  
**do not grow bigger, so these animals have to**  
**shed and grow a new one.**

**Next**





twinkl



twinkl  
Quality Standard  
Approved